



marsden high school

We would like to pay our respects and acknowledge the Wallumattagal people of the Dharug nation, the traditional custodians of the land. We would also like to pay our respect to the Elders both past and present.

CONTENTS

Welcome to Marsden High School	4
Choosing Marsden	6
Achieving at Marsden	7
Marsden Values	8
Our Curriculum	10
Technology, STEM & Robotics	12
Creative and Performing Arts (CAPA)	14
Sport	16
Co-curricular Activities	17
Pinnacle	18
Leadership	19
Student Wellbeing and Support	20
High School Transition	22
Intensive English Centre (IEC)	23
Parents and Citizens (P&C)	24
Scholarships	25
Meadowbank Education Precinct	26
Notes	27



Welcome to Marsden High School



PRINCIPAL'S MESSAGE:

Marsden High School provides exceptional educational opportunities for Year 7-12 students in a challenging and inclusive learning environment. All students are valued and respected as individuals. Our wellbeing, engagement and leadership programs encourage students to celebrate their differences, develop resilience and confidence, as well as collaboratively work together to innovate and create solutions.

As a school community we:

- are committed to the provision of effective learning in a caring, safe, supportive and cooperative environment;
- value and respect the individuality and talents of each student;
- have high expectations and are committed to academic, sporting and cultural excellence;
- seek to develop self-esteem and positive attitudes and ensure that each student is empowered to reach their potential;
- encourage tolerance and harmony through the development and understanding of belonging, community and diverse cultures.

Marsden has an experienced and highly dedicated staff with a strong ethos of collaboration, professional learning and continuous school improvement, as well as a genuine commitment to increase student development of literacy,



numeracy, critical thinking, and information and communication technology skills. Additionally we have a targeted importance placed upon enrichment, student engagement, science, technology, engineering and mathematics (STEM), creative and performing arts (CAPA), leadership and sport.

Our school offers an extensive curriculum catering for students aspiring to post-school studies and work, incorporating extension courses in English, mathematics and history. All learning programs are supported by our Learning Support and Wellbeing, Transitions/Careers, PB4L, Technology, Literacy/Numeracy, Project Based Learning, STEM and Pinnacle teams. Our student mentoring, wellbeing and vocational programs are also well supported through our partnerships with Macquarie University and a number of community and industry groups.

I am very proud to be leading such a dedicated team at Marsden. I know your child will benefit from learning in this outstanding academic environment that celebrates and rewards personal success and enables them to achieve their very best.

Mr. Lance Berry

Choosing Marsden



CHOOSING MARSDEN:

We are delighted that you are interested in our school. Marsden High School attracts students who are curious, imaginative and enjoy learning. There are many reasons why you should choose Marsden for your child.

- Marsden has dedicated professional staff who know and understand our students, providing authentic leadership and proactive support.
- We strive for academic excellence while supporting student wellbeing and encourage each individual to develop a holistic approach to 'Learning for Life'.
- We nurture student development by offering both learning support and extended learning opportunities to our students.
- Marsden has a growing reputation for innovation and technology through our strong science, technology, engineering and mathematics (STEM) and BYOD programs.
- Marsden offers a range of excellent creative and practical programs including dance, drama, music, art, timber and food technology.
- As educators we provide challenging, exciting and engaging opportunities for our students.

It is our hope that your interest in our school will result in another talented and successful student attending Marsden High School.



Achieving at Marsden

ACHIEVING AT MARSDEN:

Teaching and learning is our core business with our talented staff and students striving for and achieving excellent results. We are committed to challenging and extending all students by offering a wide curriculum inclusive of all levels of English, mathematics, sciences, languages, humanities, creative and performing arts and technology based subjects.

Throughout our teaching and learning programs, there is a strong emphasis on developing important future-focused learning skills such as creativity, critical thinking, collaboration and communication. We promote this environment to encourage and motivate students to be successful in all aspects of their education and become effective leaders and responsible citizens who achieve individual excellence.

Marsden High School provides a wide range of engaging excursions, co-curricular activities, project-based learning, STEM and technology opportunities to assist students in achieving their personal best. Marsden offers a fresh, innovative approach to extension classes such as Big History, the Galileo Project, Pinnacle and Robotics to enrich and further student knowledge and experience. We encourage our students to become involved in school activities, as well as enter competitions in all key learning areas, to challenge and extend their skills and capabilities.

Marsden Values



MARSDEN VALUES:

Marsden High School provides extensive opportunities for students to immerse themselves in the richness of school life. The school community advocates and values Positive Behaviour for Learning (PB4L), enabling all students to successfully engage with the curriculum. This practice:

- cultivates a positive, safe and amicable environment for learning;
- rewards and celebrates student success;
- sets the tone for our behaviour expectations.

The PB4L program is a research-validated behavioural practice that assists students to establish positive learning behaviours, learn to respond positively towards others and develop a growth mindset. It results in a positive school culture where learning and engagement are enhanced by increased quality teaching time and consistent behavioural standards.

These positive behaviours allow our students to C.A.R.E.

COOPERATE

Marsden's success is a collaborative effort – students and staff work together to achieve and succeed.

- Follow staff instructions
- Arrive on time
- Act safely

ACHIEVE

Students take ownership of their own learning, engaging with teachers, peers and courses to exceed their own expectations.

- Succeed through effort
- Come prepared for every lesson
- Ask for help when needed

RESPECT

Marsden supports our students to learn the skills, develop the emotional intelligence and acquire the growth mindset required to become respectful young adults.

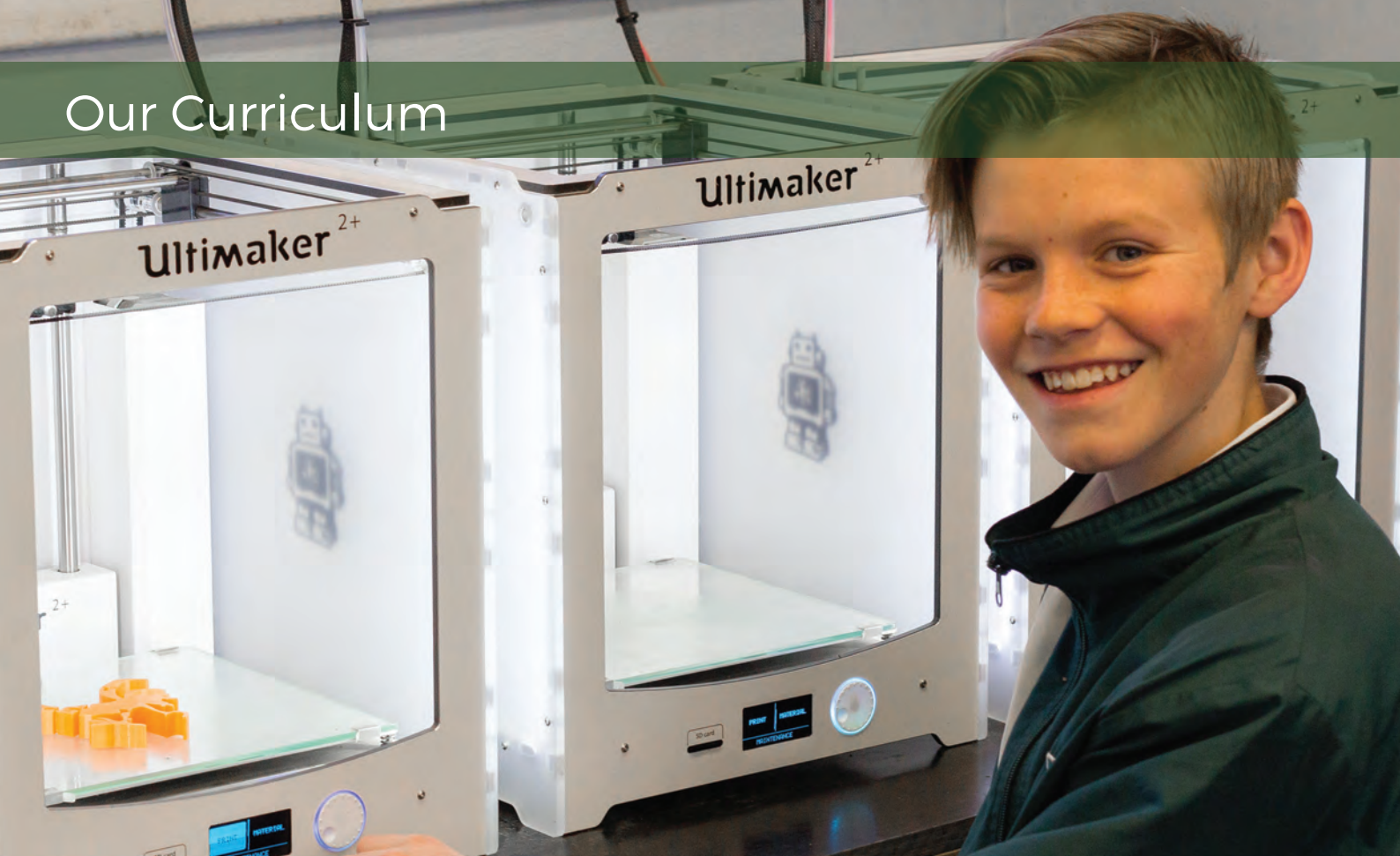
- Show courtesy to everyone
- Take responsibility for your own actions
- Wear the school uniform correctly

EVERY DAY

Every day as a community, Marsden strives for excellence - in teaching, learning and leadership - to offer a high standard of education and encourage our students to always achieve their personal best.



Our Curriculum



OUR CURRICULUM:

Marsden High School offers an extensive curriculum for all year groups, with an emphasis on future-focused learning to cater for students' diverse learning needs.

In Stage 4 (years 7 and 8), students have a varied program of learning, including English, mathematics, science, history, geography, STEM, personal development, health and physical education (PDHPE), music, technology, visual arts, languages and sport.

Moving into Stage 5 (years 9 and 10), students begin to tailor their education choices to their interests. Students study a range of mandatory subjects and choose three electives from a wide variety on offer. Some examples include forensics, big history, elective mathematics and engineering. Students in Year 10 also have time allocated to careers.

For Stage 6 students (years 11 and 12), Marsden High School offers a wide range of subjects that prepare students for tertiary study, as well as direct employment. Students can structure their program of learning to include HSC subjects that best suit them and their ambitions. Marsden offers a broad range of courses, including extension courses and vocational courses that teach industry specific skills relevant to future study and employment. The Careers Adviser works closely with students to assist them in planning their career pathways.



FUTURE-FOCUSED LEARNING HUBS:

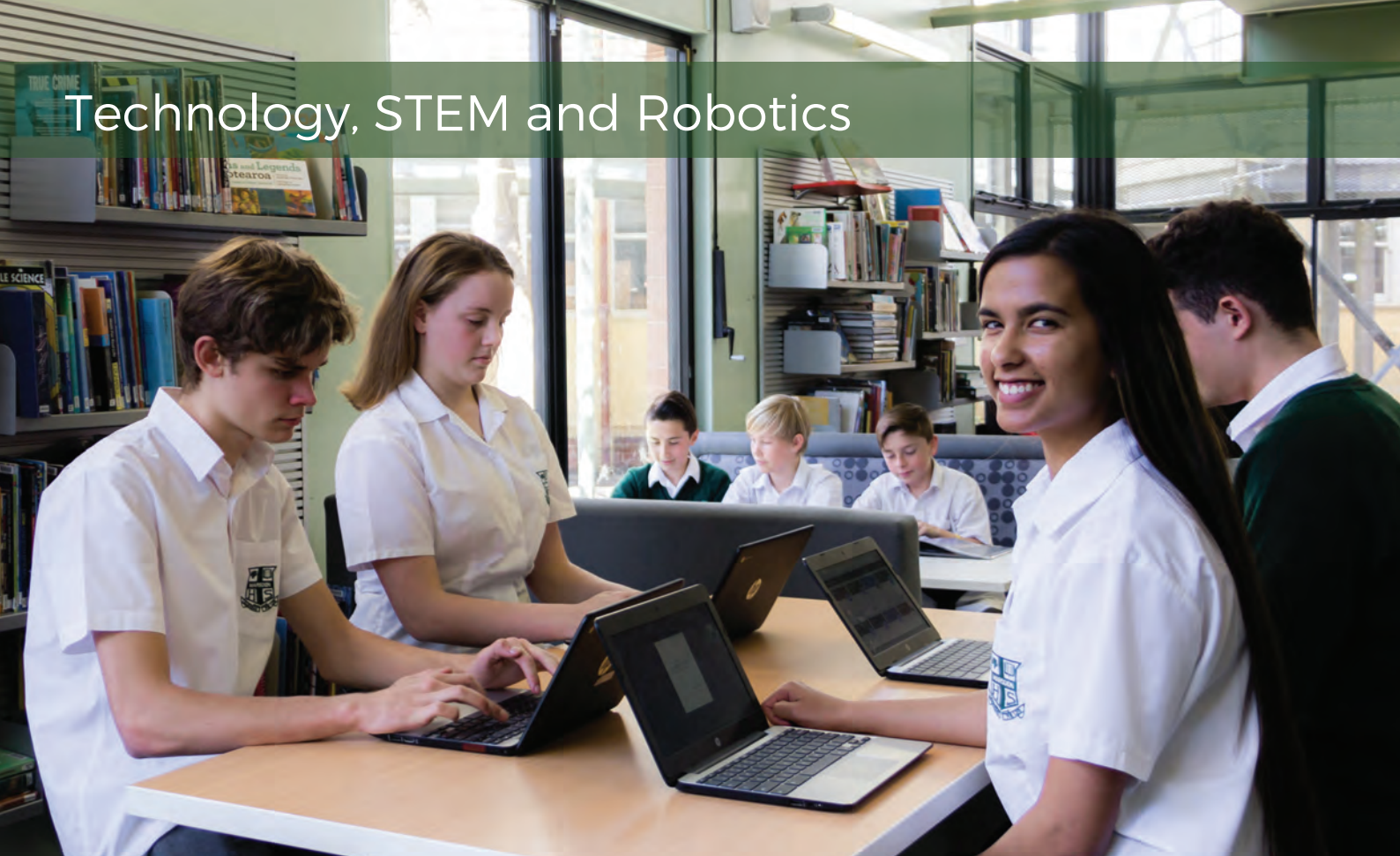
To better equip students now and into the future, in this rapidly changing and interconnected world, the NSW Department of Education is focusing on the need to develop better skills and capabilities for students.

As the dependency for technology and communication media increases, there is a large need to train, prompt, encourage and support the sense of curiosity students have about the world in a considered and well-planned way. This means students need to activate a desire to seek information and learn it – to become leaders of their own learning - within a framework of working with others.

Marsden High School is systematically preparing for this shift in teaching with future-focused learning by introducing “hub style” learning for Stage 4 students in 2019. The hubs will involve larger groups of students with two specialist teachers to guide learning, combined with smaller group activities and support. Their learning will be cross-curricular to connect with the real world and embedded within this will be project-based learning, with rich inquiry questions and the push to create a legacy for the world.

Students at Marsden will be one step closer to becoming creative, collaborative and critical thinkers, making them holistically prepared to be global citizens of our connected world.

Technology, STEM and Robotics



TECHNOLOGY, STEM AND ROBOTICS:

Marsden High School has a strong technology focus, supporting future-focused learning. Our bring your own device (BYOD) program enables the classroom to become interactive and expands the teaching and learning experience, therefore facilitating digital collaboration between students, their classmates and teachers.

BYOD provides students with access to online resources, supports collaborative projects and enables real time formative assessment in class, resulting in improved productivity, increased engagement and development of fundamental future-focused skills, vital for career preparation for a future reliant on technology.

STEM:

Marsden is fast becoming a STEM lighthouse school. STEM is an exciting addition to our students' education as it is an interdisciplinary and integrated approach to science, technology, engineering and mathematics for students in years 7-10.

While our Year 7 students are introduced to STEM, our emphasis on teaching STEM commences in Year 8 and involves the application of problem solving techniques and inquiry based learning. We develop projects centred around design



processes that both utilise and strengthen students' critical thinking and creative problem solving skills. Our projects provide students with the opportunity to deepen their scientific and mathematical thinking through research and exposure to new concepts.

Woven throughout our STEM program are key future-focused learning themes, such as global awareness, environmental sustainability, financial, economic and business literacy, as well as looking at the science, technology and mathematics curricula from a new perspective to help solidify learning outcomes.

ROBOTICS:

Robotics is one of Marsden's signature programs, providing a highly engaging, fun and challenging medium for collaboration, creativity, critical thinking and communication. Robotics is a rapidly growing field with great career prospects.

Students meet once a week in our Robotics and Technology room to develop and refine their building, programming and operating skills. Marsden's robotics team competes in regional and international competitions throughout the school year and has had great success in recent years.

Creative and Performing Arts



CREATIVE AND PERFORMING ARTS (CAPA):

Marsden High School offers a wide range of creative subjects, enabling students to learn to appreciate, compose, listen, make and perform, thereby improving their communication, self-discipline, independence, self-expression and creative thinking skills.

Our annual MADD Showcase evening highlights and celebrates the talents of our music, art, drama and dance students.

Music offers students a range of opportunities to develop and extend their musical performance, listening and composition skills and experience. There is a strong focus on group work and students performing together, building teamwork skills whilst creating amazing music.

Students are able to try many different instruments including ukulele, guitar and keyboard, as well as singing. Students also develop skills in composition where they can experiment with different genres of music. The Marsden Music Ensemble and band programs also provides musical students with the opportunity to learn in a large group and to perform for the school.



The study of **dance** is a specialised discipline that combines the science of human movement with intensive dance instruction. It includes the development of dance technique and creative composition; body skills and conditioning; cognitive development; and the human body in relation to dance.

Dance is offered as an elective in years 9-10 and as a HSC subject, along with various dance ensembles that take part in competitions and performance nights throughout the year.

Drama is a practical and creative subject focusing on performance. Students learn to control their body and voice to enhance performance skills, as well as gaining confidence in front of an audience.

Drama is taught as an elective in years 9-10 and as a HSC subject at Marsden. The Drama Club and the annual school musical/drama production provide further opportunities for students to gain experience in theatre.

Visual arts encourages creative thinkers to explore different art making materials and to study other artists for inspiration. Students experiment with a variety of artistic styles and media types such as charcoal drawing, digital imaging, painting with acrylic, oils and watercolour, sculpture, collage and animation.

Students are also able to undertake **photography and digital media** courses both as electives and for the HSC.

Sport



SPORT:

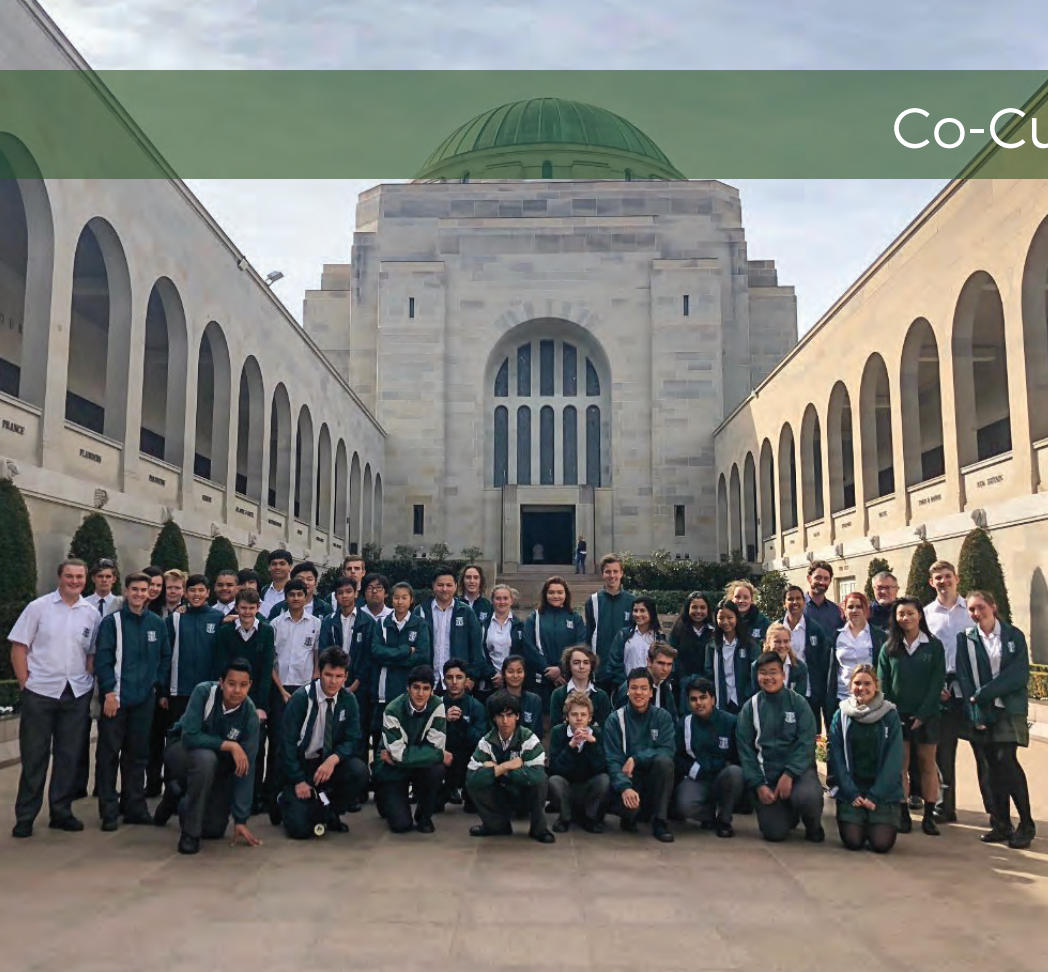
Sport has a strong history at Marsden High School. We have extensive playing facilities including our gym that provides state-of-the-art equipment for fitness and strength training and complements study in various PDHPE subjects.

Our sports program is designed to promote participation and enjoyment in physical activity, as well as encouraging students to lead active lives.

Sport is conducted on Tuesday afternoon for most year groups, where a choice of competitive zone grade sports and a wide range of non-competitive social sports are offered. Year 7 follow an integrated sports program, as part of their timetable, to ensure they have the opportunity to develop leadership, communication and sports skills confidently in a supportive environment.

Swimming, cross country and athletics are part of the annual sports calendar at Marsden. Students compete for their house at school level and can then progress to zone, regional and state competitions. We also compete in knockout and other tournaments for a range of sports. Students excelling in their area of expertise are invited to trial for zone, regional and other representative teams external to the school.


Co-Curricular Activities



CO-CURRICULAR ACTIVITIES:

Marsden High School offers students a broad range of co-curricular and extracurricular activities to support learning and provide opportunities to develop social and communication skills by engaging in real world experiences. Many of the memories and friendships created at school are formed during these events and they play an important role in providing a holistic approach to education. Some of the activities include:

- Debating and Public Speaking
- Mock Trial
- Science Club
- Robotics
- Musical/drama productions
- Dance ensembles
- Duke of Edinburgh
- Interstate and international study excursions
- Music Ensemble & band programs
- Work experience & mentoring
- Sporting competitions
- Environmental Team
- Year group camps
- Stage and Lighting Team
- Academic competitions
- Fitness Gym Group
- Chess Club
- Library Monitors



Pinnacle

PINNACLE:

Marsden High School runs the Pinnacle program for high performing students in Year 7 and Year 8. The Pinnacle program was created to extend and challenge gifted and talented students in order to maximise their learning outcomes. The program targets students who are inquisitive in their learning and have a variety of talents, in areas such as artistic, verbal/linguistic, musical, STEM and problem solving.

It is critical that gifted and talented students are given appropriate opportunities, stimulation and experiences to develop their full potential. Our Pinnacle program offers these opportunities across all subject areas.

The program is designed to challenge and extend students' critical and creative thinking skills, as well as their communication and collaboration skills. Teachers are trained to differentiate programs to enrich student learning through Project Based Learning. Pinnacle students are also offered a number of co-curricular activities including Pinnacle Camp, Pinnacle Showcase evenings, as well as social justice and problem solving activities.

Applications for the Pinnacle program open in March each year. Entry is based on student performance in a variety of areas along with an assessment of their problem solving and critical thinking skills. Please see our website for an application form and further details.



LEADERSHIP:

Marsden High School values student leadership and the provision of leadership opportunities. When working closely with teacher mentors, students build a shared vision and sense of purpose. Our leadership program sets high performance expectations and aims to develop resilient, purposeful and adaptable young people.

The **Prefect Leadership Team (PLT)** consists of senior students elected by their peers and staff members, based on their demonstrated leadership ability and capacity to further develop these skills. They oversee many school initiatives and are representatives of the whole school community.

The **Student Representative Council (SRC)** is a group of students who meet regularly to represent and discuss matters affecting the student body. Junior SRC members develop a range of early leadership skills through organising and participating in school activities and community events, as well as working collaboratively with senior school leaders.

The **Peer Support Leaders** are Year 10 students who have been trained to provide peer mentoring to Year 7 students. The program aims to develop friendships, provide support and allow students to integrate easily into the school, as well as providing leadership opportunities.

Student Wellbeing and Support



STUDENT WELLBEING AND SUPPORT:

Success comes from having a strong sense of wellbeing, as well as being engaged in the learning experience. At Marsden High School, we focus on providing a range of student support structures to enable all students to feel valued and positive about their learning.

Our Learning and Wellbeing Support team and English as an additional language or dialect (EAL/D) team assist students with their learning in a wide variety of ways, including literacy and numeracy programs, assessment provisions and wellbeing support.

The Learning and Wellbeing Hub is located in the school library, with Special Education qualified Learning and Support teachers, trained School Learning Support Officers, a youth worker and a number of multilingual support staff available to assist students, either in class or in an alternate quiet space in the library. A school psychologist is also available to provide support for students.

Marsden has a number of school wide strategies to ensure our school is a safe and enjoyable place to learn, including a partnership with Stymie to promote student wellbeing. There are also a number of programs to support wellbeing including PCYC, Conviction group, RAGE, RAISE, Elevate Education and more.



STUDY ASSISTANCE:

Marsden runs a free Homework Centre for all students, offering teacher support in homework, research, assignments and subject assistance. There is also a Senior Study Centre in the school library, staffed by a specialist teacher who provides support to Year 11 & 12 students on time management, study skills, assessment preparation and stress management.

WALLUMATTAGAL LEARNING CENTRE:

Marsden High school actively engages with the local Aboriginal community and with outside agencies in order to ensure the success of our Aboriginal students. In 2018, the school developed the Wallumattagal Learning Centre as a hub for the whole school to develop a detailed interest in Aboriginal culture and history, support our connection to the community and ensure success at school and beyond for all Aboriginal students at Marsden.

DEFENCE FAMILIES:

Marsden High School has a significant number of students from military families. Our school recognises the challenges faced by our military families and has introduced a number of additional support strategies for this sector of our community, supported by the Regional Education Defence Liaison Officer.

High School Transition



HIGH SCHOOL TRANSITION:

A key factor for a student's wellbeing and future success is their ability to navigate and manage change throughout their life. Starting and leaving high school are significant milestones for our students and, at Marsden, we focus on providing a range of programs to ensure a smooth and successful transition process.

PRIMARY TRANSITIONS:

Transition into high school is a process that Marsden starts when students are in Year 4. We have a learning alliance with our partner primary schools and offer a range of transition activities including our sports Gala Day, WINGS gifted & talented program & Science Days. We also provide a number of orientation activities & peer support mentors to our Year 7 cohort.

SENIOR TRANSITIONS:

Students transitioning out of school, whether to further study or employment, require ongoing support and access to good advice. Marsden offers a structured careers program for students as they progress through their senior school years and beyond. There is a wide range of programs on offer that involve both school based and external partner support to ensure that students have access to a full range of advice and opportunities.



NEW ARRIVALS:

Marsden High School is a multicultural school with students from over 60 different nationalities. More than 60% of students have a language background other than English and a cultural background other than Australian. Marsden offers a New Arrivals transition program for our students who are newly arrived to Australia, providing crucial support for students and their families during an often stressful stage of their migration journey.

INTENSIVE ENGLISH CENTRE:

Intensive English Centres (IECs) provide intensive English tuition to newly arrived, high school aged students whose first language is not English. In addition, the IECs provide orientation, settlement and welfare programs to prepare students for learning in a NSW government high school and to participate in Australian society.

Marsden High School has an Intensive English Centre that caters for approximately 100 students and is dedicated to instilling a love of learning English, while helping newly arrived students prepare for the academic, social and emotional demands of high school in Australia.

Parents and Citizens Association



PARENTS AND CITIZENS ASSOCIATION (P&C):

Our Parents and Citizens Association (P&C) consists of parents and carers, teachers and community members. The P&C meets regularly to contribute to decision making, policy development and management planning, as well as fundraising.

The aims of the P&C are to:

- Promote the school in a positive manner by bringing parents, citizens, students and staff together in close cooperation
- Provide facilities and equipment for the benefit and welfare of the students through voluntary contributions and fundraising

Parents and Citizens Association meetings are run monthly and provide the opportunity for the parent community to stay informed of happenings within the school and any new developments occurring. The P&C also manage the school canteen and uniform shop, where profits directly benefit the school and its students.

The P&C warmly welcomes all parents and carers.

Scholarships



SCHOLARSHIPS:

Each year Marsden High School offers a variety of scholarships to students in years 7 to 11.

These scholarships cater to the many different talents and interests of our students and include not only academic scholarships for those with a demonstrated strong academic record but also for subjects such as STEM, creative and performing arts and sports.

Our scholarships are funded through our philanthropic ex-student community, including Mr John Tuckerman and Mr Kim Williams, and the generosity of our Parents and Citizens Association. These scholarships are designed to financially support the students' learning in order to expand their opportunities and assist them to achieve their personal best.

Applications for scholarships usually close in November for the following academic year. Please visit the school website for further information regarding available scholarships at Marsden and the application process.

Meadowbank Education Precinct



MEADOWBANK EDUCATION PRECINCT:

NSW Department of Education has been working with TAFE NSW to create the Meadowbank Education Precinct. The new education precinct at Meadowbank will provide contemporary learning and teaching facilities to accommodate the fast-growing student population in the area, which is forecast to increase dramatically over the next decade.

The Precinct will provide opportunities for educational pathways to be created for students from kindergarten right through to completing a bachelor degree or diploma at TAFE NSW. The new Meadowbank Education Precinct will include two schools – a primary school and secondary school – alongside the State's first technology focused TAFE college. Meadowbank Public School will increase its capacity to 1000 places, following its relocation to the new Precinct. Marsden High School will be relocated to the new Education Precinct with capacity for 1500 secondary school students.

It is planned that the construction of the education precinct will be completed in 2021.

[illegible]

Winbourne St.
West Ryde, NSW 2114
p. 02 9874 6544
e. marsden-h.school@det.nsw.edu.au
www.marsden-h.schools.nsw.gov.au
@MarsdenHS

